



West Farm House, Ty Canol
Porthcawl, CF36 3SY



Watts
& Morgan

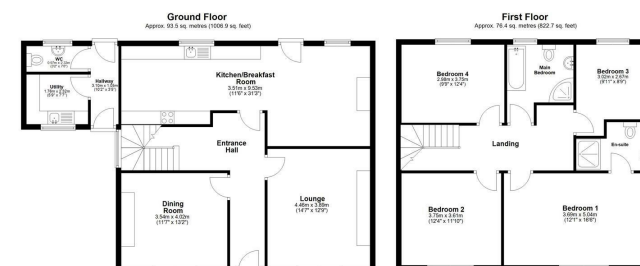
West Farm House Ty Canol

Nottage, Porthcawl CF36 3SY

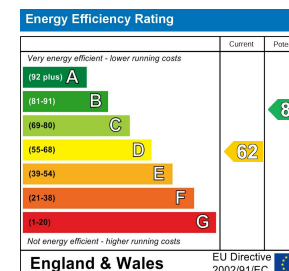
£1,850 PCM

4 Bedrooms | 2 Bathrooms | 2 Reception Rooms

A rare opportunity to acquire this charming 4-bedroom detached character property to rent, in the desirable village of Nottage, located within the coastal town of Porthcawl. Generous proportion accommodation comprises entrance hallway with flagstone flooring, two reception rooms each with parquet block flooring and gas stoves, large dining kitchen with a good range of units, electric oven, microwave and gas hob. Separate utility room and GF WC. To the first floor primary bedroom with en suite shower room, three further double beds and family bathroom with 4 piece suite. large enclosed garden to front and one parking space to rear. ER - D, Council Tax band G. Available upon completion of referencing. £1850pcm Deposit £2135



Total area: approx. 170.0 sq. metres (1820.6 sq. feet)
Plan produced by Watts & Morgan LLP
Plan produced using Planity.



Bridgend
T 01656 644 288
E bridgend@wattsandmorgan.co.uk

Cowbridge
T 01446 773 500
E cowbridge@wattsandmorgan.co.uk

Penarth
T 029 2071 2266
E penarth@wattsandmorgan.co.uk

London
T 020 7467 5330
E london@wattsandmorgan.co.uk

Follow us on

Watts & Morgan